

鄂州市临空经济区 投资指南



EZHOU AIRPORT-BASED ECONOMIC ZONE INVESTMENT GUIDE

中国唯一依托专业航空货运枢纽建设的临空经济区

CHINA'S ONLY AIRPORT ECONOMIC ZONE RELYING ON THE CONSTRUCTION OF A PROFESSIONAL AIR CARGO HUB



电话TEL: 027-60670001

地址Add: 湖北省鄂州市鄂城区吴楚大道与燕沙路交汇处产业展示中心

Industry Exhibition Center, Intersection of Wuchu Avenue and Yansha Road, Echeng District, Ezhou, Hubei, China

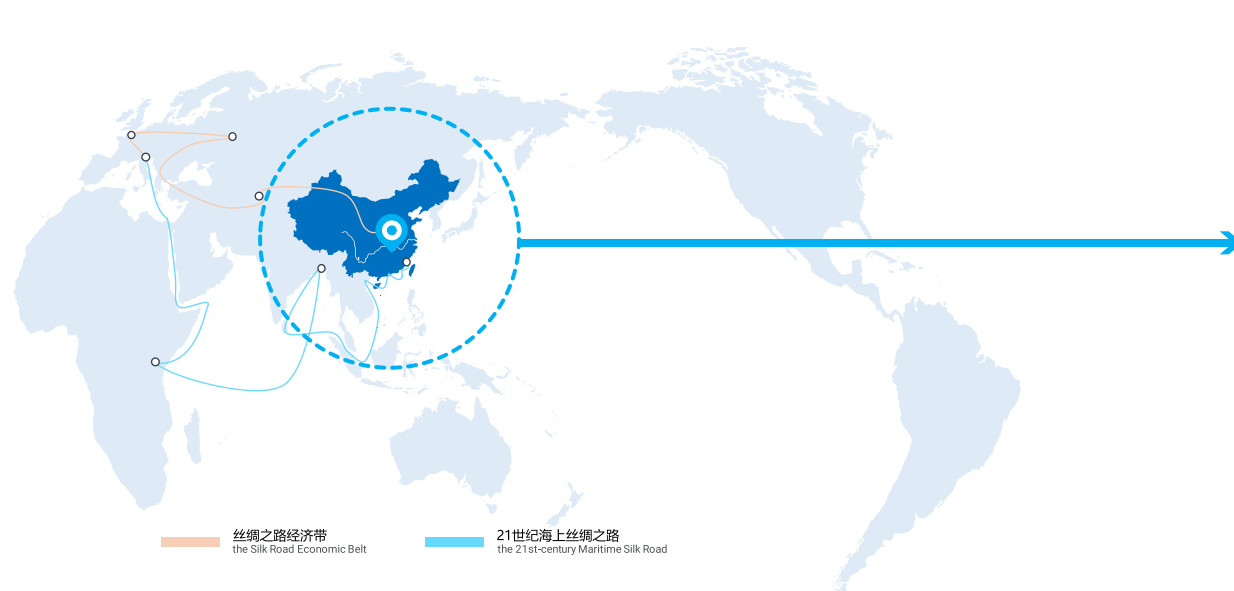
网站WEB: <http://vod.eznews.cn>



01 鄂州区位

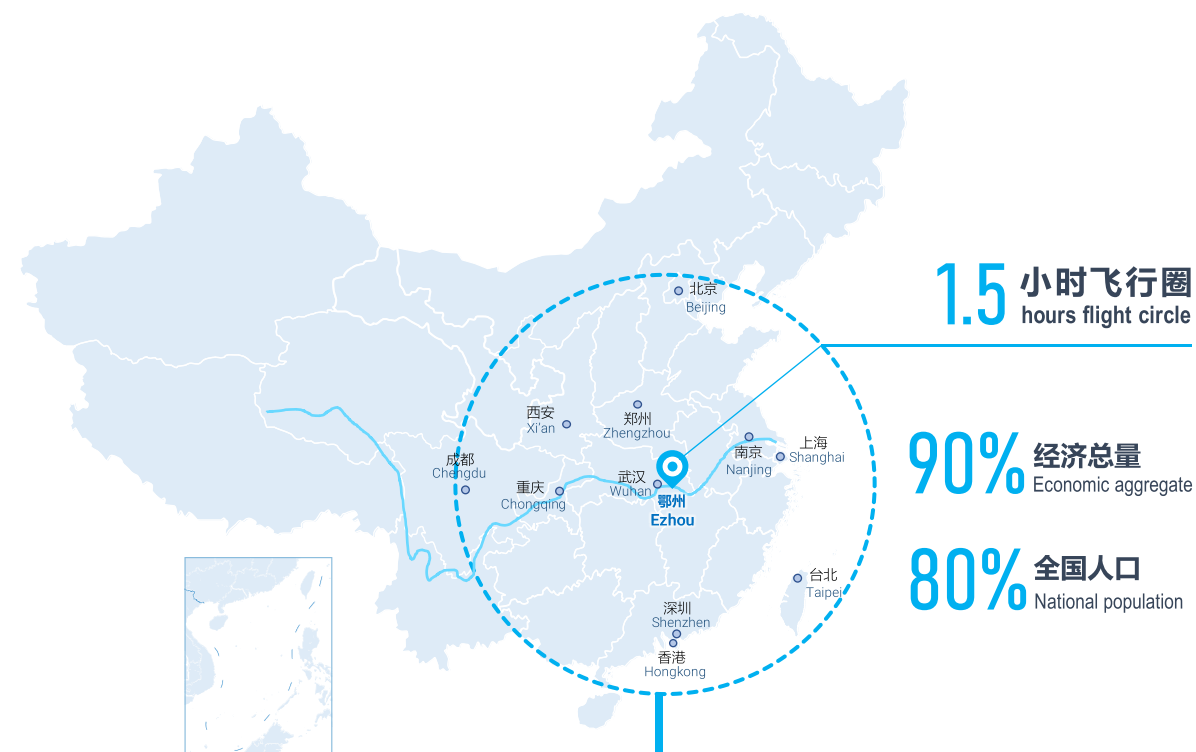
EZHOU LOCATION

鄂州市临空经济区
EZHOU AIRPORT-BASED ECONOMIC ZONE



鄂州，地处中国经济地理中心，毗邻国家中心城市武汉，处于国家“一带一路”和长江经济带两大战略的交汇点，国家“两横三纵”城市化战略的几何中心，长江中游城市群的核心节点。

Ezhou is located in the economic and geographical center of China, adjacent to Wuhan, the national central city. It lies at the intersection of national "The Belt and Road" and the Yangtze River Economic Belt. It is the geometric center of national "two horizontal and three vertical" urbanization strategy as well as the core node of urban agglomeration in the middle reaches of the Yangtze River.



鄂州基本情况

Basic situation of Ezhou

1596 平方公里
square kilometers

110 万人口
x10,000 people

33% 水域面积
Water area



鄂州市临空经济区位于鄂州主城区以东，北部、东部被长江环绕，与黄冈市隔江相望，南部邻接黄石市主城区。按照集约紧凑、产城融合的理念，已构建“一港五区”的总体空间发展格局。

Ezhou Airport-based Economic Zone is situated in the east of the main urban area of Ezhou, surrounded by the Yangtze River in the north and east, connected to Huangshi in the south, overlooking Huanggang in the north. The overall spatial development pattern of “one port and five zones” has already been built according to the concept of urban and industrial integration development.

鄂州市临空经济区定位

Positioning of Ezhou Airport-based Economic Zone

- 01

全球供应链管理中心

Global supply chain management center
- 02

内陆地区对外开放通道

Open access to the outside world for inland China
- 03

长江中游城市群产业整合平台

Industrial integration platform for city clusters in the middle reaches of the Yangtze River
- 04

绿色生态空港新城

A new city of green eco-airport

空间布局：一港五区

Spatial layout: One port and five districts

- ✈️

国际航空物流港

International Logistics Airport
- 🏢

产城融合发展区

Development Zone for City-Industry Integration
- 🏭

先进制造引领区

Leading Area for Advanced Manufacturing
- 📦

航空物流集聚区

Aviation Logistics Zone
- ⚙️

综合服务创新区

Comprehensive Services Innovation Zone
- 🌿

生态基底保护区

Ecological basement Protection Zone

规划面积

Planned Area

149km²



产城融合发展区

Development Zone for City-Industry Integration

建设城市综合体，完善社会公共服务体系。“五横六纵”城市路网和高端医疗、文体会展、国际教育等公共服务设施建设陆续开工，打造产城融合发展的现代都市典范。

Build urban complexes and improve the social public service system. The construction of “five horizontal and six vertical” urban roads network and public service facilities such as high-end medical, cultural, sports and exhibition, international education, etc. will be started one after another to create a modern urban model of integrated development of industry and city.

先进制造引领区

Leading Area for Advanced Manufacturing

重点布局综合保税区、航空货运总部区等功能性项目，发展新一代信息技术、智能装备、大健康等产业，打造临空产业集群。

Focus on the layout of the comprehensive bonded zone, air cargo headquarters area and other functional projects, the development of a new generation of information technology, intelligent equipment, comprehensive health and other industries, to create airside industrial clusters.

鄂州综合保税区

Ezhou Comprehensive Free Trade Zone

规划面积5.3平方公里，一期2.98平方公里，是全国唯一机场与港口同步规划、同步建设，水港、空港天然融合、联动发展的综合保税区。

Ezhou Comprehensive Free Trade Zone has a planning area of 5.3 square kilometers, and the first phase is 2.98 square kilometers. It is the only comprehensive free trade zone in China with simultaneous construction of airport and water port, and natural integration and linkage development of water and air transportation.

航空物流集聚区

Aviation Logistics Zone

发展现代物流、配送产业集群，发展航空服务、电子商务、金融结算等重点产业，带动相关配套产业协同发展。利用航空物流大数据，打造全球物流供应链管理中心。

Develop modern logistics and distribution industry clusters, key industries such as aviation services, e-commerce, financial settlement, and promote the synergistic development of related supporting industries. Aviation logistics big data is being utilized to create a global logistics supply chain management center.

综合服务创新区

Comprehensive Services Innovation Zone

建设国际航空特色城市生活区，发展高端居住、酒店、综合商贸等，创新发展航空经济区综合服务业。

Build a city living area with international aviation characteristics, develop high-end residence, hotel, comprehensive commerce, and comprehensive service industry for innovation and aviation economic zone.

生态基底保护区

Ecological Basement Protection Zone

建设绿色生态屏障，保护山水林田湖草，发展休闲体验、科普教育、创意文化与生态养生等产业。

Construct green ecological barriers, protect mountains, water, forest, fields, lakes and grass, develop leisure experience, science education, creative culture and ecological wellness.

03 鄂州花湖机场

EZHOU HUAHU AIRPORT

鄂州市临空经济区

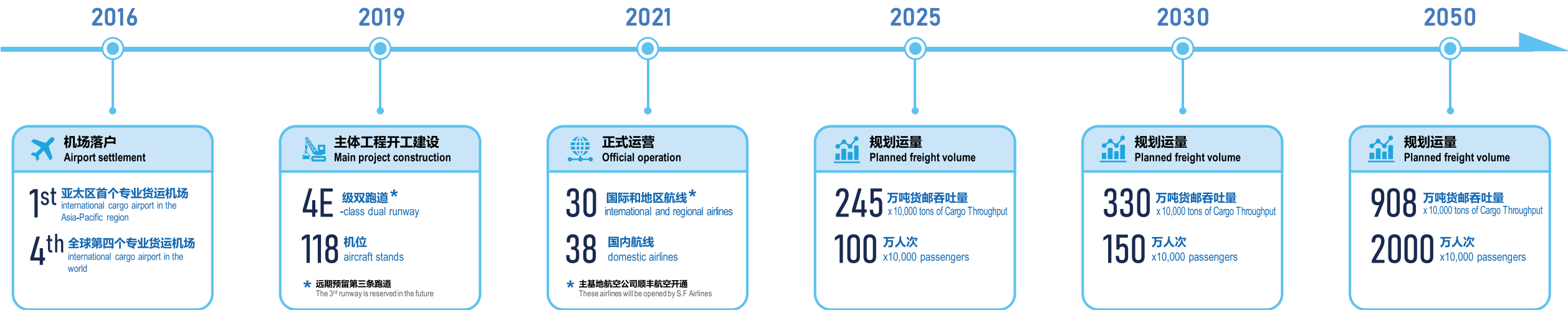
EZHOU AIRPORT-BASED ECONOMIC ZONE

2016年4月6日，国家民航总局批复湖北国际物流核心枢纽项目落户鄂州，湖北省与顺丰集团共同建设鄂州花湖机场，打造世界一流航空港。

花湖机场定位为货运枢纽、客运支线和公共平台。在构建以国内大循环为主体、国内国际双循环相互促进的新发展格局中，花湖机场作为湖北省头号工程，是湖北和长江经济带对外开放的重要平台，对提升区域功能、推动产业升级具有重要意义，必将加快武鄂一体化、同城化进程，为武汉城市圈协同发展提供示范。

On April 6, 2016, Civil Aviation Administration of China approved the establishment of Hubei international logistics core hub project in Ezhou. Hubei Province and SF Group are jointly building Ezhou Huahu Airport to build a global first-class air cargo hub.

Ezhou Huahu Airport is planned as a freight hub, passenger branch and public platform. In the construction of a new development pattern with domestic circulation as the mainstay and domestic and international double circulation reinforcing each other, Ezhou Huahu Airport, as the No.1 project in Hubei Province, is an important platform for opening up Hubei and the Yangtze River Economic Belt to the outside world, which is of great significance to enhance regional functions and promote industrial upgrading, and will definitely accelerate the integration and co-city process of Wuhan-Ezhou, providing a demonstration for the coordinated development of Wuhan City Circle.



04

多式联运交通体系

MULTIMODAL TRANSPORT SYSTEM

鄂州市临空经济区
EZHOU AIRPORT-BASED ECONOMIC ZONE

鄂州花湖机场建成后，与武汉天河机场、阳逻港、三江港、吴家山铁路枢纽等交通枢纽一起，共同构成武汉城市圈“铁、水、公、空”多式联运体系，形成“水港、陆港、空港”三港联动的发展格局。

After the completion of Ezhou Huahu Airport, it will form a multimodal transportation system of "railways, waterways, roadways and airways" in Wuhan city circle together with transportation hubs such as Wuhan Tianhe Airport, Yangluo Port, Sanjiang Port and Wujiashan Railway Hub.

- 01

武福高铁、武黄城际铁路横穿鄂州，武汉地铁11号线连接至鄂州葛店并计划延伸至花湖机场

Wu-Fu high-speed railway and Wu-Huang inter-city railway run across Ezhou. Wuhan Metro Line 11 has connected to Gedian South Railway Station and is planned to be extended to Ezhou Huahu Airport.
- 03

距武汉天河机场90公里，鄂州花湖机场与之共同构成航空客货双枢纽

Ezhou Huahu Airport is 90 kilometers away from Wuhan Tianhe Airport, with which has constituted two hubs of air passenger and cargo.
- 05

三江港属国家一类开放口岸，多式联运示范工程项目，可建5000吨级泊位120个

Sanjiang Port is a national Class I open port and a multi-modal transport demonstration project, which can build 120 wharfs with a tonnage berth of 5,000.

- 02

临靠武汉新港，三江港、葛店港、五丈港、燕矶港等深水良港在区域周围沿江分布

Close to Wuhan Yangtze River shipping center, deep-water ports such as Sanjiang Port, Gedian Port, Wuzhang Port, and Yanji Port are distributed along the river around the region.
- 04

沪蓉、福银、大广、武阳、鄂咸、汉鄂、吴楚大道、机场高速等12条道路通达四方

12 roads, including Hu-Rong, Fu-Yin, Da-Guang, Wu-Yang, E-Xian, Han-E Highways and Airport Expressway, have reached all directions.
- 06

燕矶港紧邻鄂州花湖机场，规划建设5000吨级泊位14个，与机场天然形成水港+空港联动发展

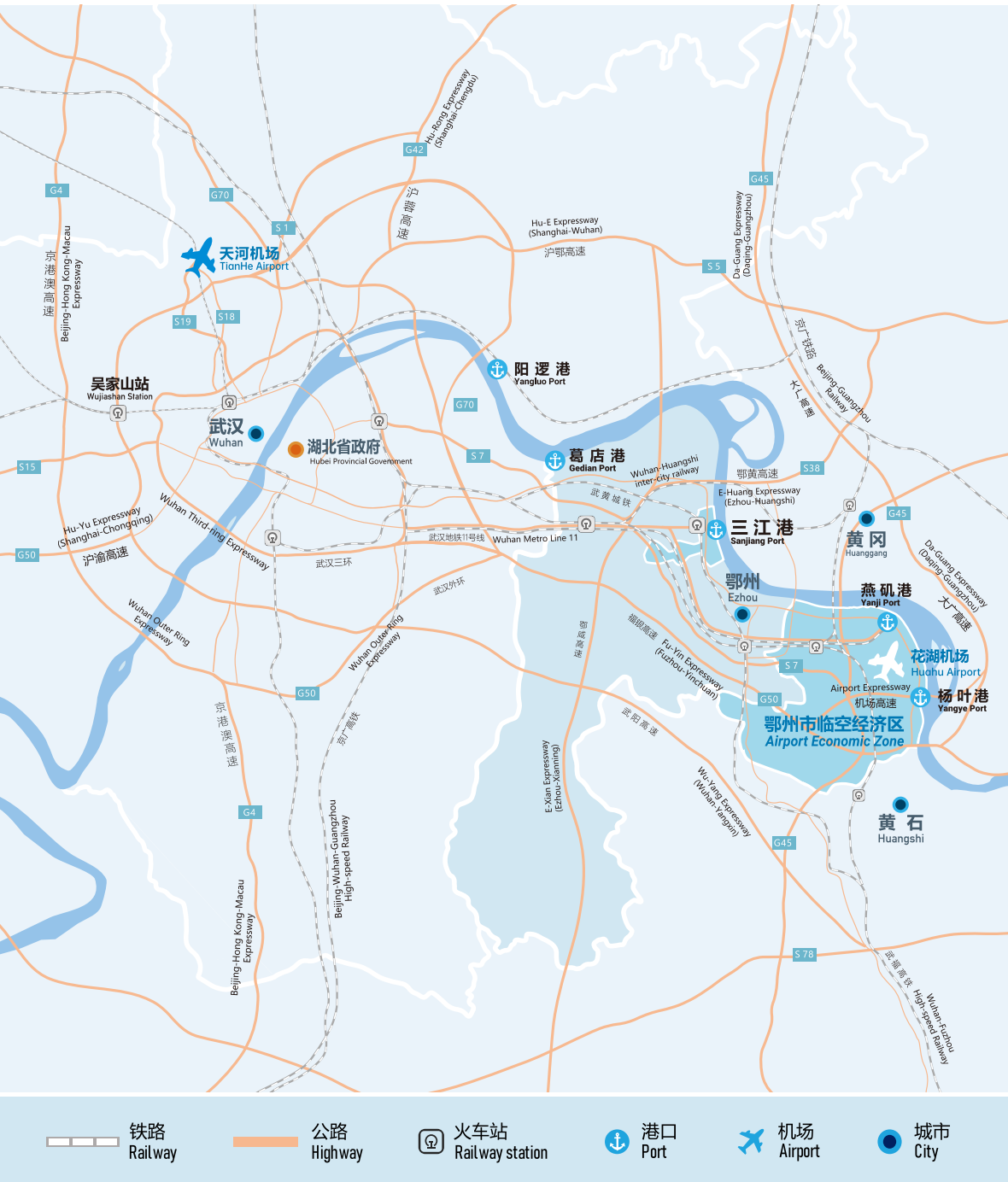
Yanji Port is adjacent to Ezhou Huahu Airport, and plans to build 14 5,000-ton berths, which naturally form a linkage development of water and air transportation.

武鄂一小时通勤圈

The "1 hour commute circle" of Wuhan City Circle

鄂州市临空经济区地处武鄂黄黄“1小时通勤圈”的核心区位，30分钟可直达武汉，距黄石、黄冈和鄂州市主城区均约15公里。沿着武汉-鄂州-黄冈-黄石公铁水空交通轴，鄂州市临空经济区与三市协同发展，推动城市格局深刻变革，加速“武鄂同城化”发展。

Ezhou Airport-based Economic Zone is situated in the core area of the "1 hour commute circle" of Wuhan City Circle. It takes 30 minutes from Ezhou Airport-based Economic Zone to reach Wuhan, and is about 15 kilometers away from the main city of Huangshi, Huanggang and Ezhou. Along the Wuhan-Ezhou-Huanggang-Huangshi water-air traffic axis, Ezhou Airport-based Economic Zone and the other 3 cities have developed synergistically to promote the profound transformation of the urban structure, which will definitely accelerate the integration and co-city process of Wuhan-Ezhou.



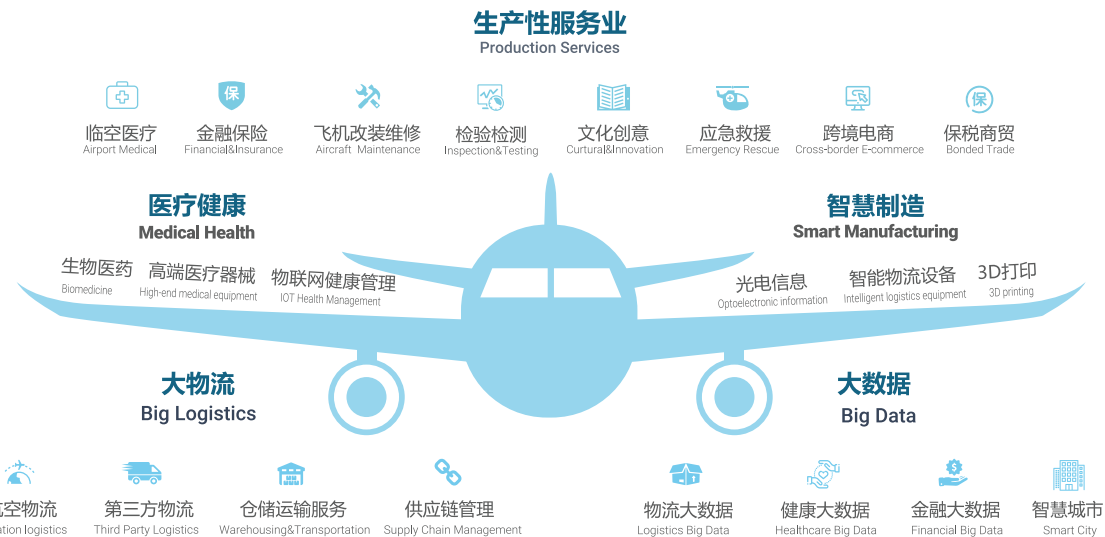
05 产业发展规划

INDUSTRIAL DEVELOPMENT PLANNING

鄂州市临空经济区
EZHOU AIRPORT-BASED ECONOMIC ZONE

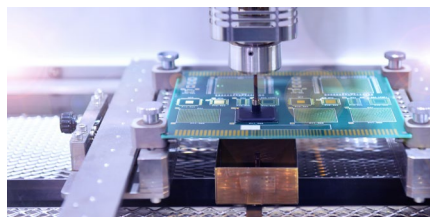
在“一港五区”总体空间布局的基础上，鄂州市临空经济区围绕“一体两翼两引擎”布局空港经济，重点聚焦航空物流、智能制造、医疗健康、光电子等四大主导产业，推动产业链向价值链高端跃升。

On the basis of the overall spatial layout of "one port and five districts", Ezhou Airport-based Economic Zone develops airport economy according to the positioning of "one body, two wings and two engines". Focus on the four leading industries of aviation logistics, intelligent manufacturing, medical and health, and optoelectronics to promote the industrial chain to leap towards the high end of the value chain.



光电子产业园

Optoelectronics Industry Park



重点发展集成电路、新型显示、光通信、新能源和智能网联汽车等细分领域。

Focus on the subdivided industries such as integrated circuits, new displays, optical communications, new energy and intelligent networked vehicles.

航空物流产业园

Aviation Logistics Industry Park



重点发展航空货运、航空快递、保税物流、冷链物流、分拨转运、现代仓储、全球货代、供应链管理等全过程供应链物流。

Focus on air cargo, air express, bonded logistics, cold chain logistics, distribution and transshipment, modern warehousing, global freight forwarding, supply chain management and other whole-process supply chain logistics.



医疗健康产业园

Medical and Health Industry Park

重点发展基因、疫苗等生物制药、生物制品的生产流通，医疗器械的研发与生产流通，血液供应及活体器官移植，精准诊疗技术，智慧医疗以及高端养生服务，健康管理与服务等。

Focus on the Production and distribution of biopharmaceuticals and biological products such as genes and vaccines, the R&D, production and circulation of medical devices, blood supply and living organ transplantation, precision diagnosis and treatment technology, smart medical treatment, high-end health care services and health management, etc.



智能制造产业园

Intelligent Manufacturing Industry Park



重点发展飞机改装维修及零部件制造（MRO）、航空复合材料再制造、智能物流设备制造、3D打印及增材制造、智能终端、人工智能机器人、智能仪器仪表与工业传感器等精密器械、互联网+智慧工厂、工业互联网。

Focus on the development of aircraft modification and maintenance and parts manufacturing (MRO), aviation composite material remanufacturing, smart logistics equipment manufacturing, 3D printing and additive manufacturing, smart terminals, artificial intelligence robots, smart instruments and industrial sensors and other precision equipment, Internet + Smart factory and industrial Internet, etc.



会展中心 EXHIBITION CENTER 1	
展示中心 Exhibition Center	50016㎡
会议中心 conference Center	14524㎡
科技馆 science Museum	10342㎡
其他配套服务设施 Supporting service facilities	10111㎡
地下停车场 Underground Parking Lot	25480㎡
设备用房及其他配套设施 Equipment rooms and other supporting facilities	7685㎡



体育中心 SPORTS CENTER 2	
体育场 Stadium	42500㎡
体育馆 Gymnasium	22800㎡
游泳馆 Natatorium	16000㎡
全民健身综合训练馆 Comprehensive training hall	16000㎡
其他配套设施及平台层 Supporting facilities and platforms	42200㎡
地下停车场 Underground Parking Lot	32900㎡
设备用房 Equipment rooms	9700㎡
地下商业配套设施 Underground commercial facilities	3900㎡
生态TOD Eco TOD	4000㎡

文化中心 CULTURAL CENTER 3	
大剧院 Grand Theater	14975㎡
多功能小剧场(黑匣子) Multifunctional theater	435㎡
剧院配套设施 Theater supporting facilities	4557㎡
美术馆 Art gallery	2920㎡
大屋盖投影 Roof projection	4704㎡
美术馆配套设施 Art gallery facilities	3162㎡
剧院配套设施 Theater facilities	7189㎡
地下设备用房 Underground equipment rooms	2192㎡
地下停车场 Underground Parking Lot	10566㎡



临空经济区实验学校
EZHOU AIRPORT-BASED ECONOMIC ZONE EXPERIMENTAL SCHOOL 5

总建筑面积33808㎡，主要建设教学楼、综合楼、图书馆、多功能报告厅、操场、行政楼、配电室、门卫室等建筑，新建运动场，购置一批教学设施设备。

The total construction scale is 33,808 m², and the main buildings include teaching buildings, comprehensive buildings, libraries, multi-functional lecture halls, playgrounds, administrative buildings, power distribution rooms, and guard rooms. It will build a new sports field and purchase a batch of teaching facilities and equipment.



鄂州市公共卫生临床中心
EZHOU PUBLIC HEALTH CLINICAL CENTER 4

集预防、医疗、教学、公共卫生、重大疫情防控和医疗应急物资储备为一体的平战结合的医疗综合体，总投资35.9亿元，规划用地437亩，净用地330亩，建筑规模47.9万平方米，分三期建设完成。

It is a medical complex integrating prevention, medical treatment, teaching, public health, major epidemic prevention and control, and medical emergency supplies. The total investment is 3.59 billion yuan, the planned land area is 437 mu, and the construction scale is 479,000 square meters. The construction will be completed in three phases.

07 商业综合体 COMMERCIAL COMPLEXES

鄂州市临空经济区
EZHOU AIRPORT-BASED ECONOMIC ZONE



吾悦广场 | WUYUE PLAZA

6

项目由商业和住宅两种业态组成，总建面约80万方，其中自持运营8.2万方购物中心、建设开发50万方住宅及商业街。购物中心汇聚了国际影城、商业街区、品牌餐饮、休闲娱乐、儿童教育、电玩健身、大型商超、潮流品牌等八大主力业态。

This project has two property formats: shopping malls and residential buildings. The total construction area is about 800,000 m², including self-owned shopping center with an area of 82,000 m², and residential buildings and commercial street with an area of 500,000 m². The shopping mall focuses on eight major business formats, including international cinemas, commercial blocks, branded catering, leisure and entertainment, children's education, video games and fitness, large-scale supermarkets, and trendy brands.



居然之家 | EASYHOME PLAZA

7

项目规划用地约 316 亩，总投资约 30 亿元人民币，拟投资建设临空区商业商务形象地标、功能地标，商务总部办公、商务酒店、大型购物中心和生活居住等多元功能于一体的时尚商务高地。

The planned land area for this project is about 316 mu, with a total investment of about 3 billion yuan. It will be built as a commercial and business image landmark and a functional landmark in Ezhou Airport-based Economic Zone. It will become a fashionable business highland integrating multiple functions such as business headquarters, business hotels, large shopping malls, and living and residence.